
(Omni)Set Virtual COM

Purpose

The document is aimed to illustrate the procedure for setup the omni-directional scanner interface as Virtual COM mode.

Scope

This document is applicable to Mica (M-9030), Libra (L-7050), Pavo (P-3060), Nova (N-4060, N-4070) with USB interface.

Requirements

- Omni-Directional Scanner
- PC + MS-Windows + USB Port
- Driver: ScantechIDCDCVxxxx.inf
- USB Cable
- 12 V Adaptor (for N-4070)

Procedure

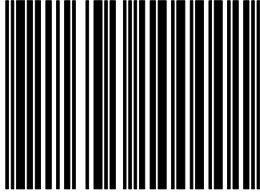
Please follow the steps to set Virtual COM.

- Plug the USB cable between PC and scanner.
- Ensure the USB cable is connected, and then plug the adaptor on scanner if needed. The scanner will begin to initialize.

A. Configure Scanner

-Scan the following labels sequentially to set interface as Virtual COM.

Open Programming Mode



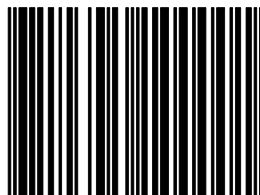
1.1

USB RS-232 EMULATION



3.5.4

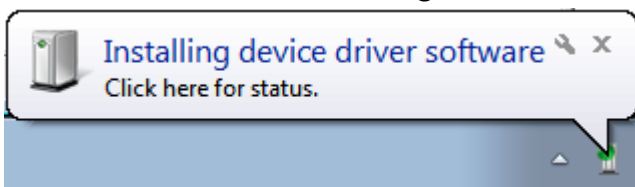
Close Programming Mode



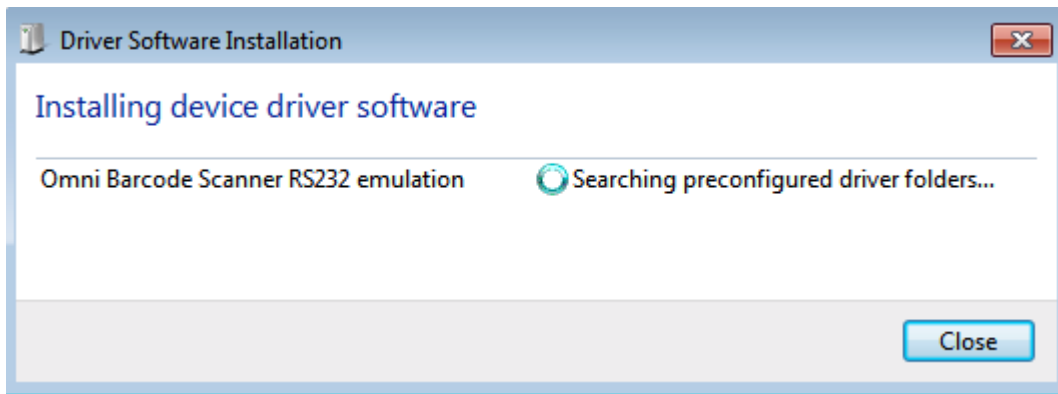
1.1

B. Install Driver

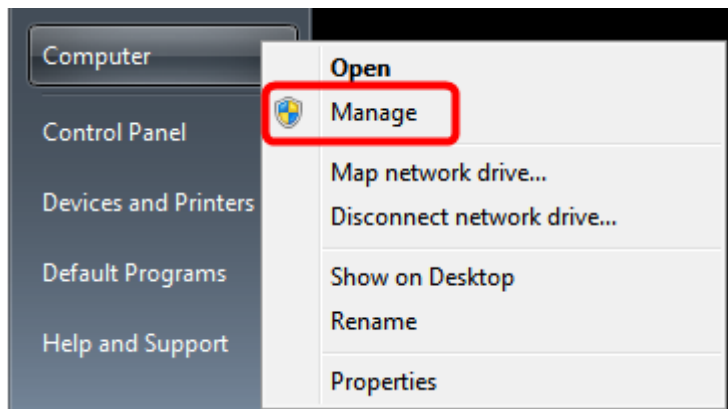
-After configuration, the Windows will prompt "Installing device driver software" on status bar. Click the message immediately.



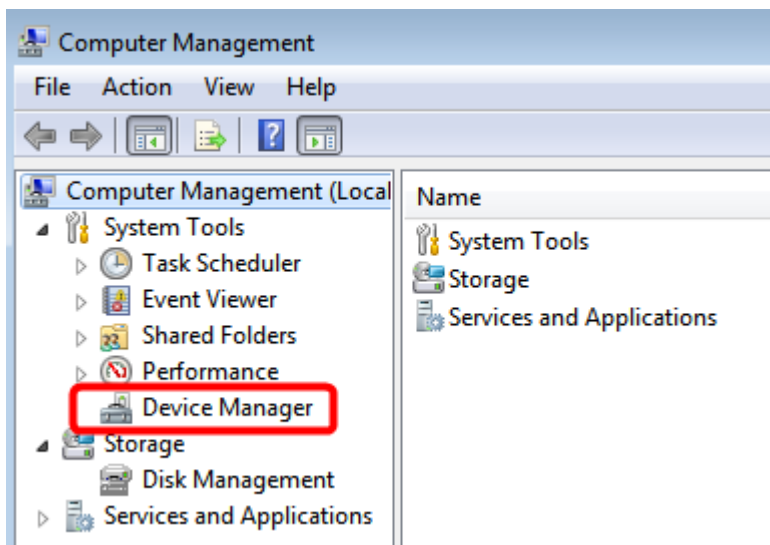
-Click ignore installing from Windows Update to close the installation.



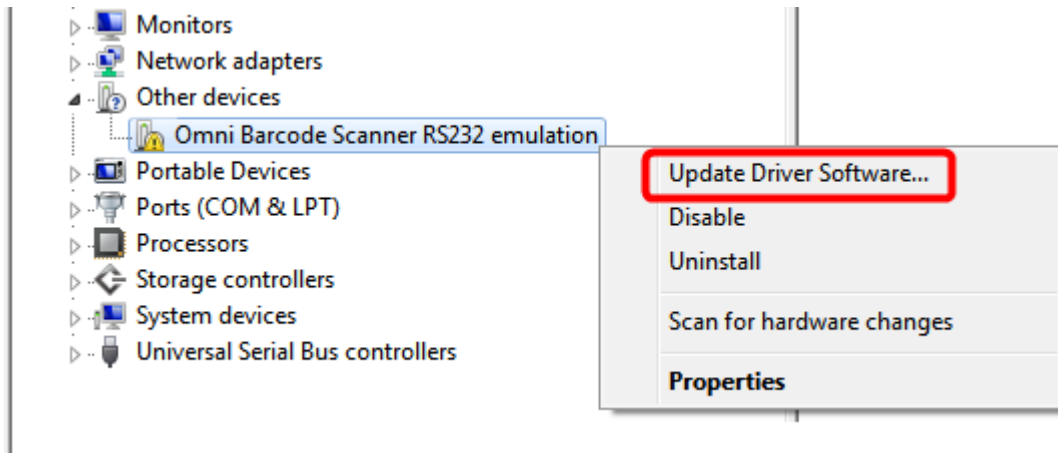
-Click "Start". Right-click on "Computer". Select "Manage".



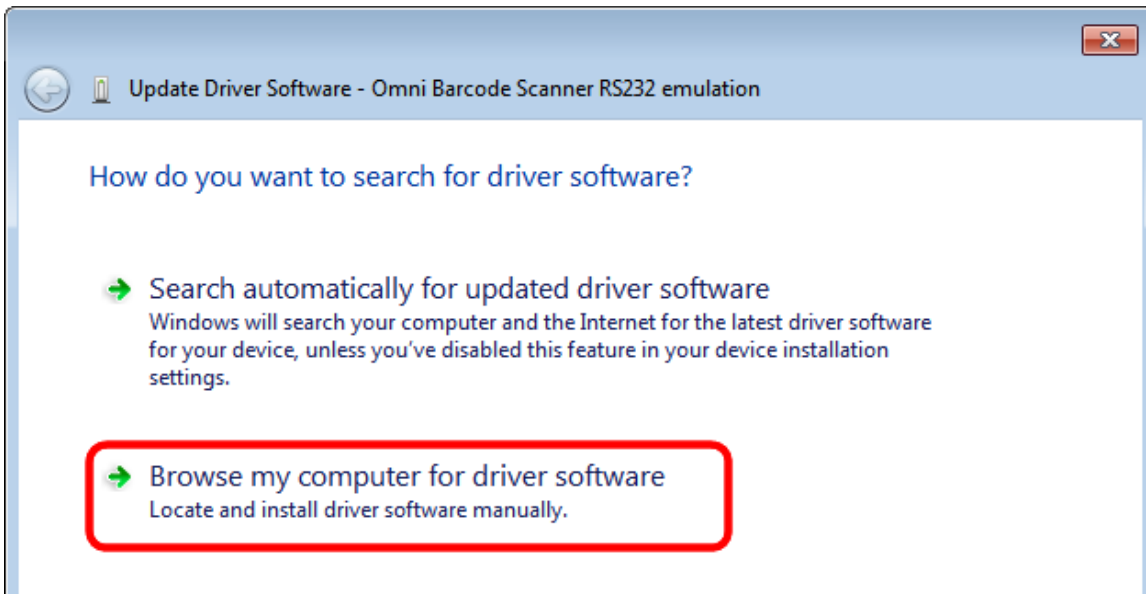
-Click "Device Manager".



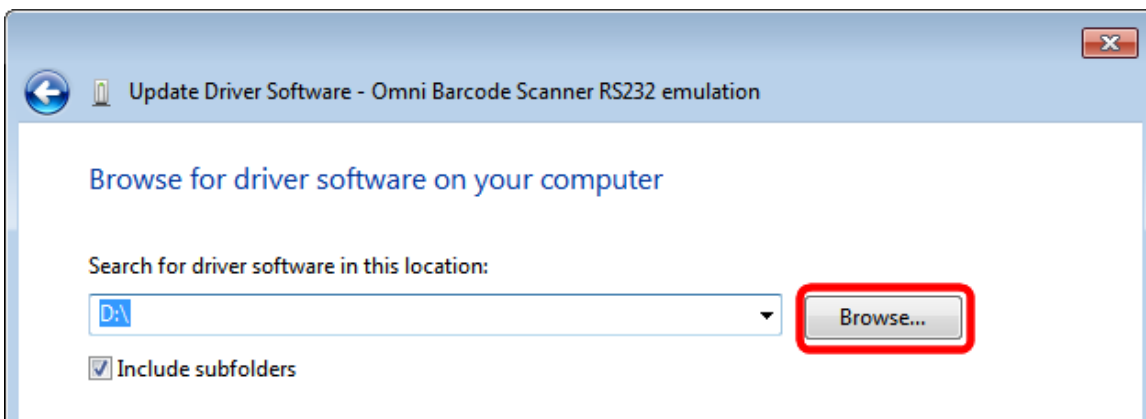
-Expand "Other Devices". Right-click on "Omni Barcode Scanner RS232 emulation". Select "Update Driver Software".



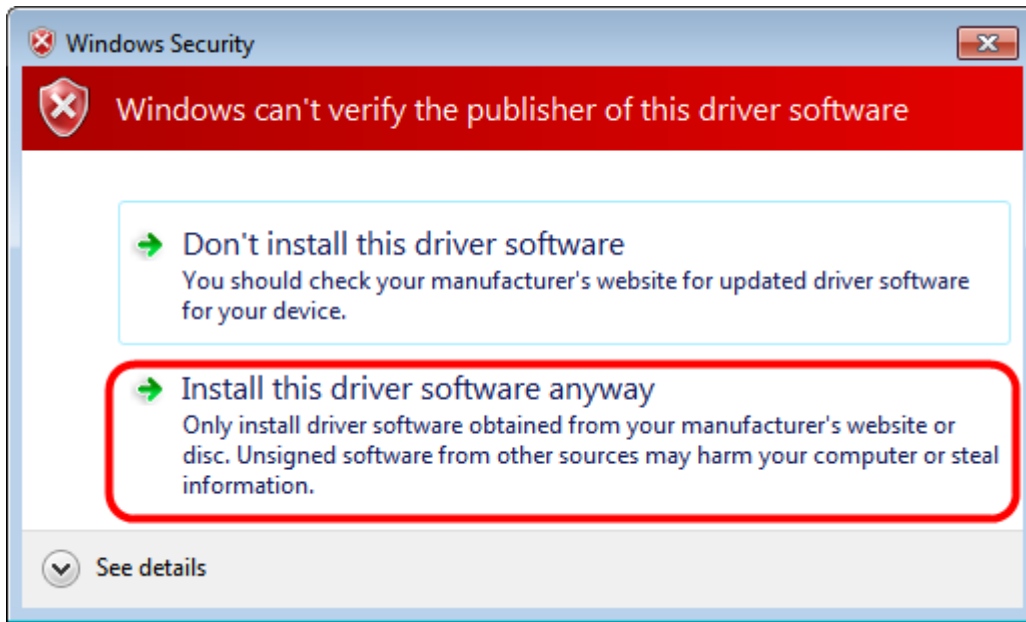
-Select "Browse my computer for driver software".



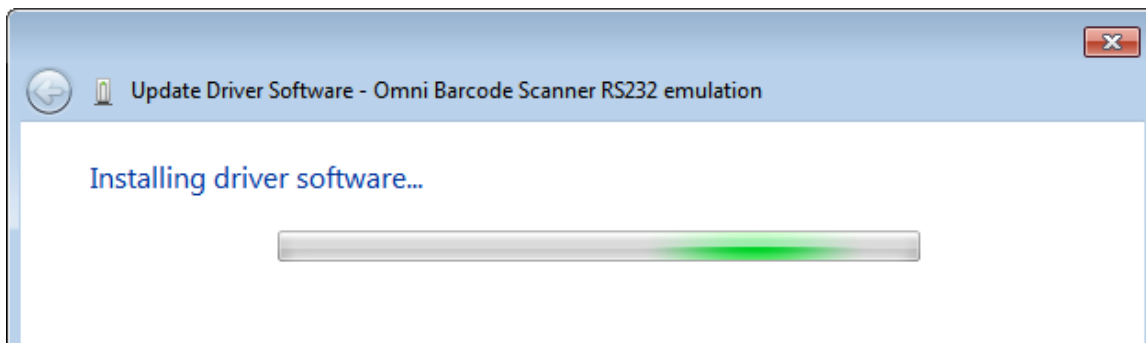
-Click "Browse" to select the folder the driver is stored. Click "Next" for next step.



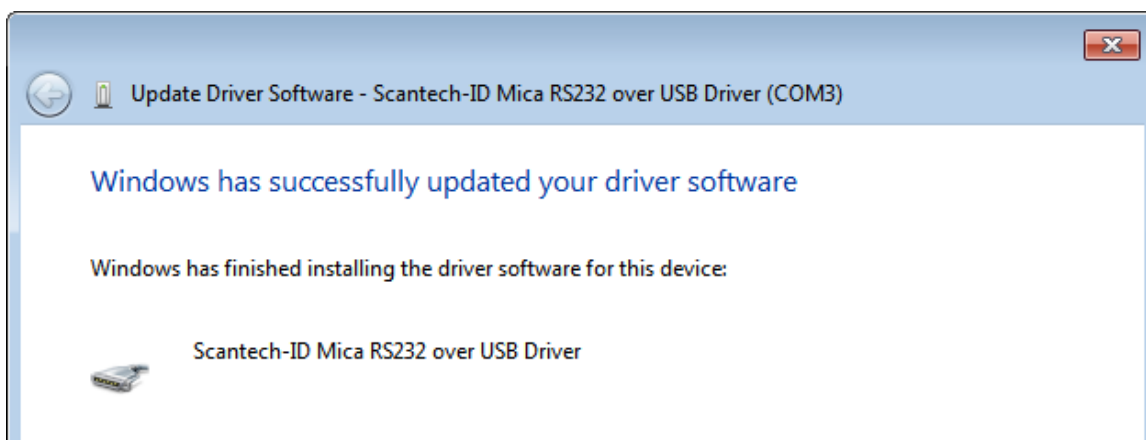
-When the security warning pops up, select "Install this driver software anyway".



-Wait for a while for driver installation.

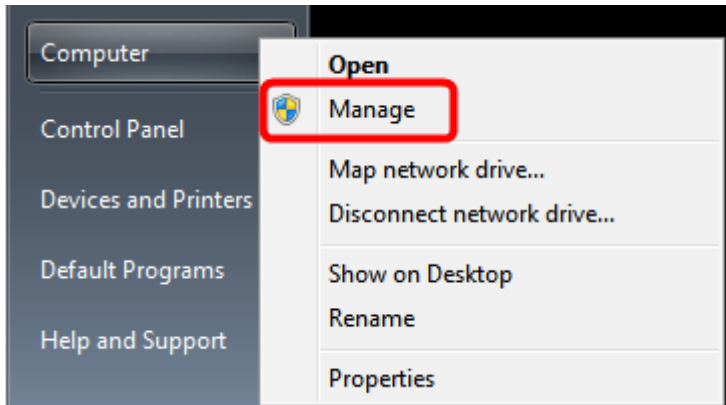


-When installation is finished, the device name is shown. Click "Close" to finish.

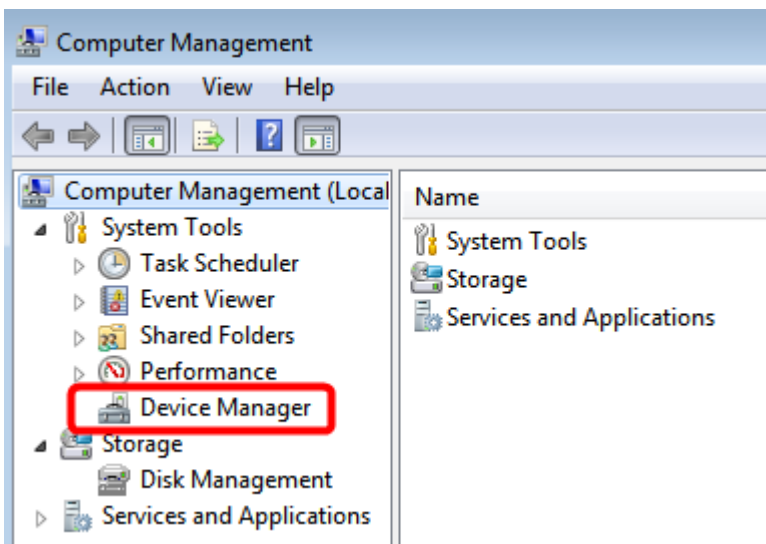


C. Check Com Port Number

-Click "Start". Right-click on "Computer". Select "Manage".



-Click "Device Manager".



-Expand "Ports (COM & LPT)". All the peripherals will be shown.



-Check the COM port number on 'Scantech-ID Scanner RS232 over USB Driver'. In this case, the COM port is allocated at COM 3.

-On the RS-232 software at host or PC, set the following parameters to connect the scanner.

- COM Port Number (check at the above figure)
- Baud Rate = 9600
- Data Bit = 8
- Stop Bit = 2
- Parity Check = None
- Handshaking = None
- DTR Check = Enable

Part Number

The following cable part numbers are for reference if required to replace RS-232 cable as USB cable.

0114-SM04121 USB cable, 1500mm, for Mica, Libra

0114-S802121 USB cable, 3000mm, for Pavo, Nova